

Bi-Directional, Single Tone Industrial Air Horn

*EFFECTIVE OUTDOOR COVERAGE OF UP TO 3 KILOMETERS

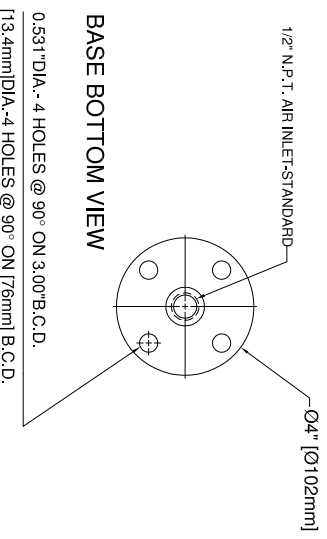
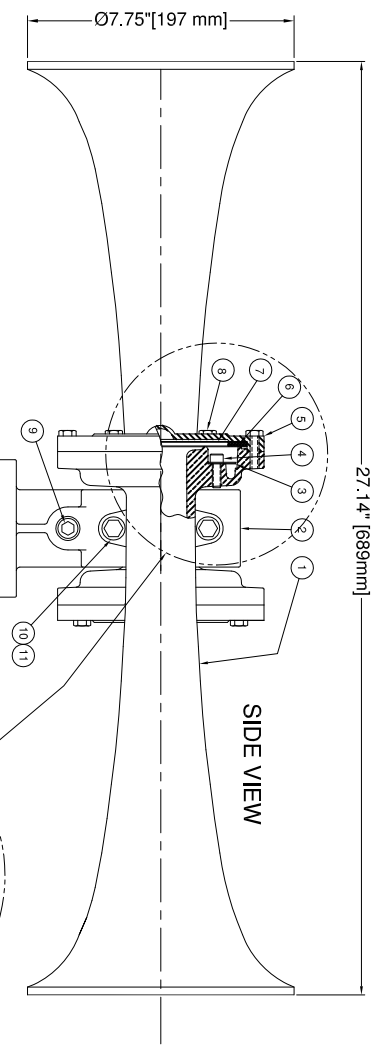
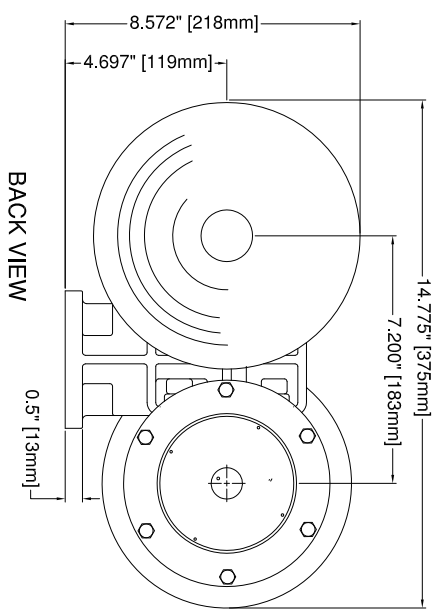


- Single tone, 311 Hz fundamental frequency, engineered to produce full harmonic contents up to 12 octave in order to enhance warning effectiveness
- Energy efficient with hermetically sealed stainless steel diaphragm assembly
- Will operate on a wide range of pressure without tuning and field adjustments for years of trouble-free service
- Construction: High strength aluminum casting and stainless steel fasteners

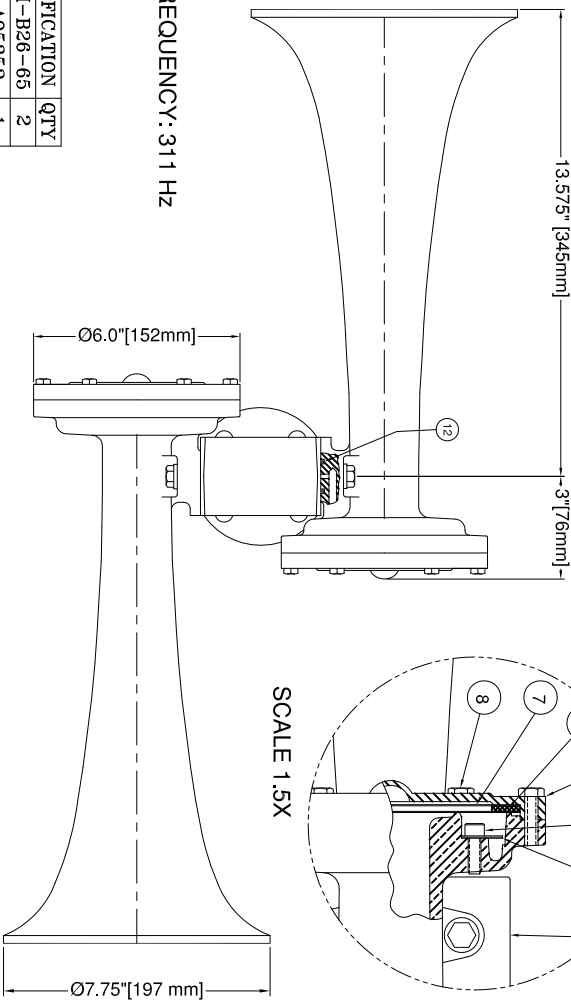
* Signal will produce a sound pressure level of approximately 70 dB @ 3 km in calm, cool conditions without topographical interference. Signal strength at distance can vary dramatically depending on environmental and geographical conditions. Please consult factory for more detailed information.

Operating Medium: Control:	Air, nitrogen, CO ₂ , 1/2" NPT inlet Manual, solenoid or combination valve
SPL (Loudness) on Total: Consumption:	140 ± 1 dBA @ 1 meter 22 L/sec [45 SCFM] @ 7 bar [100 PSIG]
Audibility: Fundamental Frequency: Tone (Musical Note):	3 km (bi-directional) on still air 311 Hz ± 10 Hz D ₄ sharp
Operating Pressure: Operating Temperature:	5-10 bar [72-145 PSI] -40°C to 85°C [-40°F to 185°F]
Finish: Degree of Protection:	Primed and painted red IP 54
Basic Dimension: Net Weight:	689x375x218mm [27X15X9"] 6.4 kg [14 lbs]

REV.	BY	DATE	DESCRIPTION	APP'D.



FUNDAMENTAL FREQUENCY: 311 HZ



ALL DIMENSIONS ARE FOR REFERENCE ONLY, U.S.

* RECOMMENDED SPARE PARTS

REF PART	DESCRIPTION	MATERIAL	SPECIFICATION	QTY
1	30101 BELL BODY, 311Hz	CAST ALUMINUM	ASTM-B26-65	2
2	30124 TWO BELL BASE	CAST ALUMINUM	UNS A95352	1
3	30143 DIAPHRAGM	STAINLESS STEEL	UNS S30400	2
4	30144 SOCKET HD. CAP SCREW	STAINLESS STEEL	ASTM F594	6
5	30109 DIAPHRAGM CAP	DIE CAST ALUMINUM	ASTM-B26-65	2
6	30112 CUSHION RING	SILICONE RUBBER	ASTM D2000	2
7	30111 DIAPHRAGM DISC	STAINLESS STEEL	UNS S30100	4
8	30110 HEX HEAD CAP SCREW	STAINLESS STEEL	ASTM F593C	12
9	20914 PIPE PLUG 3/8" NPT	ALLOY STEEL	ASA B18.8	2
10	30119 HEX HEAD CAP SCREW	STAINLESS STEEL	ASTM F593C	4
11	30122 LOCKWASHER	STAINLESS STEEL	ASA B27.1	4
12	30211 O RING	BUNA N	ML STD 417	2

CONFIDENTIAL

INFORMATION CONTAINED HEREIN IS CONFIDENTIAL. IT IS THE PROPERTY OF KAHLBERG INDUSTRIES INC. IT IS TO BE USED SOLELY FOR THE PURPOSE PROVIDED, AND IT IS NOT TO BE DISCLOSED TO OTHERS WITHOUT THE PRIOR WRITTEN CONSENT OF KAHLBERG INDUSTRIES INCORPORATED.



OUTLINE DIMENSIONS / PARTS LIST
MODEL K1R1 AIR HORN
SINGLE TONE REVERSED HORNS

CAGE: 75214

Copyright Kahlberg Ind. Inc. 2010

DR.	DATE	CKD.	SCALE	DRWG. NO.	REV.
ZJN	03/19/13	EMK	N.T.S.	30240	